

- ▶ **COAXIAL CABLE**
- ▶ **CCTV CABLE**
- ▶ **NETWORK CABLE**
- ▶ **FIBER OPTIC CABLE**
- ▶ **PATCH CORD CABLE**
- ▶ **CONTROL CABLE**

Cables & wires

ASTON CABLE
杭州爱思特线缆有限公司



HANGZHOU ASTON CABLE CO.,LTD

Add: ShuangYuan Village, Linglong Street, LinAn,
Hangzhou, China

Tel: 86-571-63857395

E-mail: Sales@astoncable.com

[http:// www.astoncable.com](http://www.astoncable.com)



Company Profile

Aston Cable is located in Hangzhou Linan City, It takes one and half hours from Shanghai Pudong Airport or Xiaoshan Airport by car.

Aston is a professional communications cable manufacturer, specialized in coaxial cables. Main products are RG59, RG6, RG11, RG59 With Power, RG6 With Power and other single or combined cables.

We have advanced manufacturing machines and testing equipments, high technique, management regulation and complete quality control systems for mass production. Our company have passed ISO9001 ISO14001, And our products are RoHS, CE, IEC Compliant.

Our products are exported to Dubai, Saudi Arabia, Turkey, Algeria, France, Germany, Great Britain, Brazil, Argentina, USA, Indonesia, Philippines, etc.



Sales Department



**Customer First,
Contact Us Now!**

Martin Mao

+86-15258-862612
martin@astoncable.com

Bob Yin

+86-13071805831
sales@astoncable.com

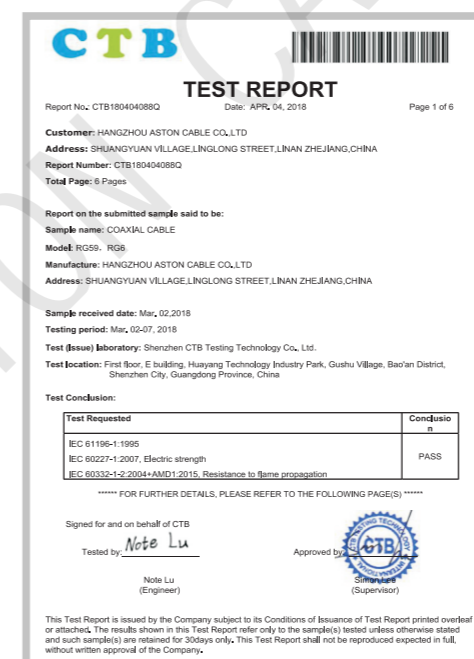
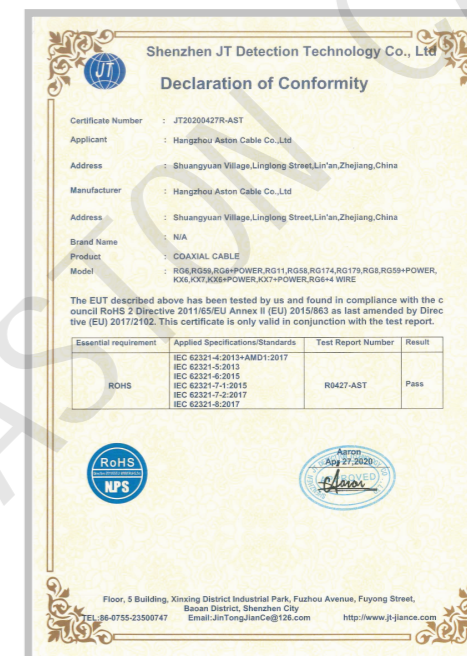
Lin

+86-15158140737
lin@astoncable.com

Michael Chen

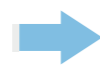
+86-13486623975
michael@astoncable.com

Qualification certificate



PRODUCT CATALOGUE

Rg59 Coaxial Cable	01		
RG59 With Power Cable	02		
RG6 Coaxial Cable	03		
Copper RG6 Coaxial Cable	04		
Copper RG6 With Power Cable	05		
RG6 Coaxial With Power Cable	06		
RG11 Coaxial Cable With Messenger	07		
RG11 Coaxial Cable	08		
CAT5E UTP Outdoor Double Jacket Cable	09		
CAT5E FTP Cable	10		
CAT6 UTP Copper Cable	11		
CAT6 FTP Copper Cable	12		
CAT6 SFTP Copper Cable	13		
CAT6A U/UTP Cable	14		
CAT6A F/FTP Cable	15		
CAT6A S/FTP Cable	16		
		CY Control cable	17
		SY Control cable	18
		YY Control cable	19
		Thermostat wire	20
		Fiber Optic Cables	21
		(GJYXCH/GJYXFCH)	23
		(GJXH/GJFH)	24
		Speaker cable	25
		Speaker cable round	26
		Alarm cable	27
		Fire Alarm cable	28
		Unshield Fire Alarm cable	29
		Coaxial Jumper Cable	30
		Network Patch Cord	31



Factory scene



Core Injection Line



High Speed Braiding Machine



PVC Jacket Line



PVC Words Printing

RG59 Coaxial Cable



Cable Construction		Electrical Characteristics	
Construction	0.81 ± 0.01	Max. Conductor DC Resistance at 20°C (Ohm/km)	320
Standard Dia.(mm)	0.81	Min. Insulation DC resistance at 20°C(MΩ x km)	45
Couductor	CCS	Operating Temperature Range	-15 to 60
Size	20AWG	Rated Voltage(V)	300
/	/	Capacitance(pF/m)	53.1
/	/	Velocity Ratio(%)	66
/	/	Impedance (Ω)	75 ± 3

Insulation Layer		Gas injection Foam PE	
Thickness(mm)		1.44	
Insulation Dia.(± 0.15mm)		3.7	
Insulation Colour		Natural Colour	
AL-Pet-AL Shield		>115%	
Braiding Layer		Aluminim	
Construction(Standard)		0.12x16x6	
Braiding Coverage		78%	
Jacket		/	
Thickness(mm)		0.80	
Dia.(± 0.15mm)		6.00	
Jacket Colour		Black	
Package		100m/Cardboard Reel	

Hz	10MHz	50Mhz	100Mhz	200Mhz	400Mhz	700Mhz	1000Mhz
Attenuation at 20°C (dB/100m) (± 8%)	6.50	9.50	12.60	18.40	27.20	38.00	47.00
Min Return Loss(dB)	20	20	20	20	20	20	20

RG59 with Power Cable



Cable Construction		Electrical Characteristics	
Construction	0.81 ± 0.01	Max. Conductor DC Resistance at 20°C (Ohm/km)	320
Standard Dia.(mm)	0.81	Min. Insulation DC resistance at 20°C(MΩ x km)	45
Couductor	CCS	Operating Temperature Range	-15 to 60
Size	20AWG	Rated Voltage(V)	300
/	/	Capacitance(pF/m)	53.1
/	/	Velocity Ratio(%)	66
/	/	Impedance (Ω)	75 ± 3

Insulation Layer		Gas injection Foam PE	
Thickness(mm)		1.44	
Insulation Dia.(± 0.15mm)		3.7	
Insulation Colour		Natural Colour	
AL-Pet-AL Shield		>115%	
Braiding Layer		CCA	
Construction(Standard)		0.12x16x6	
Braiding Coverage		78%	
Power cable			
Construction		2*0.5 / 2*0.75 / 2*1.5 CCA	
Insulation		HDPE	
Jacket			
Thickness(mm)		0.80	
Dia.(± 0.15mm)		9.5 ± 0.05	
Jacket Colour		White	
Package		305m/ Wooden drum	

Hz	10MHz	50Mhz	100Mhz	200Mhz	400Mhz	700Mhz	1000Mhz
Attenuation at 20°C (dB/100m) (± 8%)	6.50	9.50	12.60	18.40	27.20	38.00	47.00
Min Return Loss(dB)	20	20	20	20	20	20	20

RG6 Coaxial Cable



Cable Construction		Electrical Characteristics	
Construction	1.02 ± 0.01	DCR Inner conductor at 20°C (Ohm/km)	78
Standard Dia.(mm)	1.02	DCR Shields at 20°C (Ohm/km)	17.5
Couductor	CCS	Operating Temperature Range	-15 to 60
Size	18AWG	Capacitance(pF/m)	52 ± 3
/	/	Velocity Ratio(%)	82
/	/	Impedance (Ω)	75 ± 3

Insulation Layer	Gas injection Foam PE
Thickness(mm)	1.79
Insulation Dia.(± 0.15mm)	4.6
Insulation Colour	Natural Colour
Bond-Pet-AL Shield	>115%
Braiding Layer	Aluminim
Construction(Standard)	0.12mmx16x8
Braiding Coverage	95%
Jacket	
Thickness(mm)	0.75
Dia.(± 0.15mm)	6.90
Jacket Colour	Black
Package	100m/coil reel

Hz	10MHz	50Mhz	100Mhz	200Mhz	400Mhz	700Mhz	1000Mhz
Attenuation at 20°C (dB/100m) (± 8%)	2.30	4.60	6.50	9.50	13.10	17.20	21.3
Min Return Loss(dB)	20	20	20	20	20	20	20

Copper RG6 Coaxial Cable



Cable Construction		Electrical Characteristics	
Construction	1.02 ± 0.01	DCR Inner conductor at 20°C (Ohm/km)	22
Standard Dia.(mm)	1.02	DCR Shields at 20°C (Ohm/km)	17.5
Couductor	BC	Operating Temperature Range	-15 to 60
Size	18AWG	Capacitance(pF/m)	52 ± 3
/	/	Velocity Ratio(%)	82
/	/	Impedance (Ω)	75 ± 3

Insulation Layer	Gas injection Foam PE
Thickness(mm)	1.79
Insulation Dia.(± 0.15mm)	4.6
Insulation Colour	Natural Colour
AL-Pet-AL Shield	>115%
Braiding Layer	Copper-Clad Aluminum Alloyed
Construction(Standard)	0.12mmx16x6
Braiding Coverage	72%
Jacket	
Thickness(mm)	0.75
Dia.(± 0.15mm)	6.90
Jacket Colour	White
Package	300m/ wooden drum

Hz	10MHz	50Mhz	100Mhz	200Mhz	500Mhz	1000Mhz
Attenuation at 20°C (dB/100m) (± 8%)	2.30	4.60	6.50	9.50	15.00	21.30
Min Return Loss(dB)	20	20		20	20	20

Copper RG6 With Power Cable



Cable Construction		Electrical Characteristics	
Construction	1.02 ± 0.01	DCR Inner conductor at 20°C (Ohm/km)	22
Standard Dia.(mm)	1.02	DCR Shields at 20°C (Ohm/km)	17.5
Couductor	BC	Operating Temperature Range	-15 to 60
Size	18AWG	Rated Voltage(V)	300
/	/	Capacitance(pF/m)	53.1
/	/	Velocity Ratio(%)	66
/	/	Impedance (Ω)	75 ± 3

Insulation Layer		Gas injection Foam PE	
Thickness(mm)		1.79	
Insulation Dia.(± 0.15mm)		4.6	
Insulation Colour		Natural Colour	
AL-Pet-AL Shield		>115%	
Braiding Layer		Copper-Clad Aluminum Alloyed	
Construction(Standard)		0.12x16x8	
Braiding Coverage		95%	
Power cable			
Construction		2*0.5 / 2*0.75 / 2*1.5 CCA	
Insulation		HDPE	
Jacket			
Thickness(mm)		0.75	
Dia.(± 0.15mm)		11.56 mm with Power Wire	
Jacket Colour		Black	
Package		305m/ wooden drum	

Hz	10MHz	50Mhz	100Mhz	200Mhz	500Mhz	1000Mhz
Attenuation at 20°C (dB/100m) (± 8%)	2.30	4.60	6.50	9.50	15.00	21.30
Min Return Loss(dB)	23	23	23	23	23	20

RG6 Coaxial With Power Cable



Cable Construction		Electrical Characteristics	
Construction	1.02 ± 0.01	DCR Inner conductor at 20°C (Ohm/km)	78
Standard Dia.(mm)	1.02	DCR Shields at 20°C (Ohm/km)	17.5
Couductor	CCS	Operating Temperature Range	-15 to 60
Size	18AWG	Capacitance(pF/m)	52 ± 3
/	/	Velocity Ratio(%)	82
/	/	Impedance (Ω)	75 ± 3

Insulation Layer		Gas injection Foam PE	
Thickness(mm)		1.79	
Insulation Dia.(± 0.15mm)		4.6	
Insulation Colour		Natural Colour	
Bonded Pet-AL Shield		>115%	
Braiding Layer		Aluminum	
Construction(Standard)		0.12x16x8	
Braiding Coverage		95%	
Power cable			
Construction		2*0.5 / 2*0.75 / 2*1.5 AL	
Insulation		HDPE	
Jacket			
Thickness(mm)		0.75	
Dia.(± 0.15mm)		11.56 mm with Power Wire	
Jacket Colour		Black	
Package		305m/ wooden drum	

Hz	10MHz	50Mhz	100Mhz	200Mhz	400Mhz	700Mhz	1000Mhz
Attenuation at 20°C (dB/100m) (± 8%)	2.30	4.60	6.50	9.50	13.10	17.20	21.3
Min Return Loss(dB)	20	20	20	20	20	20	20

RG11 Coaxial Cable With Messenger



Cable Construction		Electrical Characteristics	
Construction	1.63	DCR Inner conductor at 20°C (Ohm/km)	39.4
Standard Dia.(mm)	1.63	DCR Shields at 20°C (Ohm/km)	16.5
Conductor	CCS	Operating Temperature Range	-15 to 60
Size	14AWG	Capacitance(pF/m)	52 ± 3
		Velocity Ratio(%)	82
		Impedance (Ω)	75 ± 3

Insulation Layer	Gas injection Foam PE
Thickness(mm)	2.73
Insulation Dia.(±0.15mm)	7.10
Insulation Colour	Natural Colour
Bond Pet-AL Shield	>115%
Braiding Layer	Aluminim
Construction(Standard)	0.16x16x8
Braiding Coverage	85%
Jacket	
Thickness(mm)	0.75
Dia.(±0.15mm)	10.30
Jacket Colour	Black PE
Package	500m/Wooden drum
Messenger (mm)	1.83 Steel

Hz	10MHz	50Mhz	100Mhz	200Mhz	400Mhz	700Mhz	1000Mhz
Attenuation at 20°C (dB/100m) (±8%)	1.48	3.11	4.05	5.53	8.23	11.50	14.22
Min Return Loss(dB)	25	25	25	25	25	23	23

RG11 Coaxial Cable

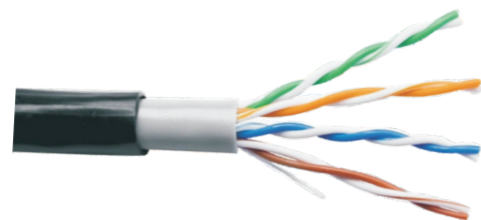


Cable Construction		Electrical Characteristics	
Construction	1.63	DCR Inner conductor at 20°C (Ohm/km)	8.5
Standard Dia.(mm)	1.63	DCR Shields at 20°C (Ohm/km)	16.5
Conductor	BC	Operating Temperature Range	-15 to 60
Size	18AWG	Capacitance(pF/m)	52 ± 3
		Velocity Ratio(%)	82
		Impedance (Ω)	75 ± 3

Insulation Layer	Gas injection Foam PE
Thickness(mm)	2.73
Insulation Dia.(±0.15mm)	7.10
Insulation Colour	Natural Colour
AL-Pet-AL Shield	>115%
Braiding Layer	Aluminim
Construction(Standard)	0.16x16x8
Braiding Coverage	85%
Jacket	
Thickness(mm)	0.75
Dia.(±0.15mm)	10.30
Jacket Colour	Black PE
Package	500m/Wooden drum

Hz	10MHz	50Mhz	100Mhz	200Mhz	500Mhz	1000Mhz
Attenuation at 20°C (dB/100m) (±8%)	1.38	2.95	3.05	5.53	8.98	14.22
Min Return Loss(dB)	20	20	20	20	18	18

CAT5E UTP Outdoor Double Jacket Cable



Specifications:

Inner conductor	Single Bare Copper(0.495mm ± 0.005)
Insulation	HDPE
Insulation Dia	0.9mm ± 0.05
Core colour	white-blue;white-orange;white-green&white-brown
Jacket Material	PVC
Colour	White
Size	5.8mm ± 0.2
Wall thickness	0.8mm
Second Jacket	PE
Colour	Black
Size	6.4mm ± 0.2
Wall thickness	0.3mm

Electric data at 20°C

Conductor Resistance	≤96Ω/km
Insulation Resistance	≥5000MΩ X KM
Testing Voltage	wire/wire50Hz 1min=1.5KV
Permissible temperature	-10°C to 60°C

Other Electric data

Frequency	Impedance	RL	ATT	NEXT	ELFEXT	PSNEXT	PSELFEXT	SKW
Mhz	ohm	≥dB/100m	≤dB/100m	≥dB/100m	≥dB/100m	≥dB/100m	≥dB/100m	≤ns/100m
1	100 ± 15	20	2.04	65.3	63.8	62.3	60.8	≤45
4		23	4.1	56.3	51.7	53.3	48.7	
10		25	6.5	50.3	43.8	47.3	40.8	
16		25	8.2	47.3	39.7	44.3	36.7	
20		25	9.3	44.5	37.7	42.8	34.7	
31.25		23.6	11.6	42.9	33.9	39.9	30.9	
62.5		21.5	17	38.4	27.8	35.4	24.8	
100		20.1	22	35.3	23.8	32.3	20.7	

CAT5E FTP Cable



General standards: ISO/IEC 11801, EN 50173, TIA/EIA 568-A

Patch cable Support current category 5 applications, such as: 10 Base-T, 100 Base-T, FDDI, ATM

Construction and Dimensions

Construction	Shielded 4 twisted pairs
Conductor	Stranded bare copper(7*0.16mm)
Conductor dia	AWG 26 (0.48mm)
Insulation material	Foam skin polyethylene (PE)
Diameter over insulation	0.95 ± 0.05mm
Drain wire	Tinned copper , 18*0.1mm
Shield	Aluminium/polyester foil
Jacket material	PVC (Flame retardant)
Outer diameter	5.2 ± 0.2mm

Electrical characteristics (at 20 °C)

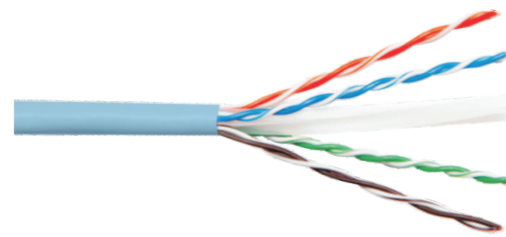
Frequency (Mhz)	1	4	10	16	20	31.25	62.5	100
Specification (dB/10m)	0.3	0.6	1	1.2	1.4	1.8	2.6	3.3

Next (Near and cross talk)

Frequency (Mhz)	1	4	10	16	20	31.25	62.5	100
Specification (dB)	62	53	47	44	42	40	35	32

Nominal mutual capacitance at 1kHz	50nF/km
Maximum conductor DCR	135Ohm/km
NVP-Nominal Velocity of propagation	0.75c
SKEW-propagation delay difference(100MHz)	Typical ≥40ns/100m
Impedance 1-100MHz	100 ± 15Ohm

CAT6 UTP Copper Cable



Specifications:

Inner conductor	Single Bare Copper 23AWG
Insulation	HDPE
Insulation Dia	0.9mm ± 0.05
Core colour	white-blue;white-orange;white-green&white-brown
Jacket Material	PVC
Colour	Blue
Size	6.1mm ± 0.2
Wall thickness	0.7mm

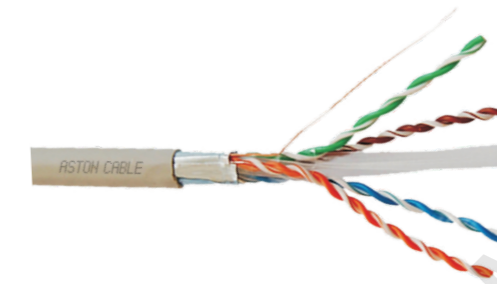
Electric data at 20°C

Conductor Resistance	≤93.8 Ω/km
Insulation Resistance	≥5000MΩ X KM
Testing Voltage	wire/wire50Hz 1min=1.5KV
Permissible temperature	-10°C to 60°C

Other Electric data

Frequency	Impedance	RL	NEXT	PSNEXT	ELFEXT	PSELFEXT	ACR	PSACR
Mhz	ohm	≥dB/100m	≤dB/100m	≥dB/100m	≥dB/100m	≥dB/100m	≥dB/100m	≤ns/100m
1	100 ± 15	20.0	65.3	62.3	63.8	60.8	72.3	70.3
4		23.0	56.3	53.3	51.7	48.7	61.5	59.5
10		25.0	50.3	47.3	43.8	40.8	53.3	51.3
16		25.0	47.3	44.3	39.7	36.7	48.6	46.6
20		25.0	44.5	42.8	37.7	34.7	46.3	44.3
31.25		23.6	42.9	39.9	33.9	30.9	41.2	39.2
62.5		21.5	38.4	35.4	27.8	24.8	32.0	30.0
100		20.1	35.3	32.3	23.8	20.7	24.5	22.5

CAT6 FTP Copper Cable



Specifications:

Inner conductor	Single Bare Copper 23AWG
Insulation	HDPE
Insulation Dia	0.9mm ± 0.05
Core colour	white-blue;white-orange;white-green&white-brown
Shield	Aluminum Foil
Drain wire	26AWG
Jacket Material	PVC
Colour	Gray
Size	6.5mm ± 0.2
Wall thickness	0.7mm

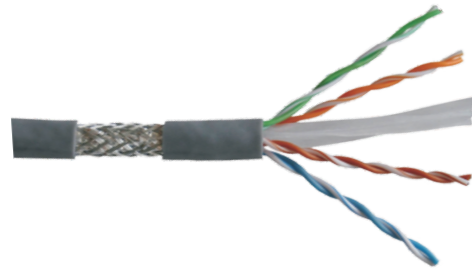
Electric data at 20°C

Conductor Resistance	≤93.8 Ω/km
Insulation Resistance	≥5000MΩ X KM
Testing Voltage	wire/wire50Hz 1min=1.5KV
Permissible temperature	-10°C to 60°C

Other Electric data

Frequency	Impedance	RL	NEXT	PSNEXT	ELFEXT	PSELFEXT	ACR	PSACR
Mhz	ohm	≥dB/100m	≤dB/100m	≥dB/100m	≥dB/100m	≥dB/100m	≥dB/100m	≤ns/100m
1	100 ± 15	20	65.3	62.3	63.8	60.8	72.3	70.3
4		23	56.3	53.3	51.7	48.7	61.5	59.5
10		25	50.3	47.3	43.8	40.8	53.3	51.3
16		25	47.3	44.3	39.7	36.7	48.6	46.6
20		25	44.5	42.8	37.7	34.7	46.3	44.3
31.25		23.6	42.9	39.9	33.9	30.9	41.2	39.2
62.5		21.5	38.4	35.4	27.8	24.8	32.0	30.0
100		20.1	35.3	32.3	23.8	20.7	24.5	22.5

CAT6 SFTP Copper Cable



Specifications:

Inner conductor	Single Bare Copper 23AWG
Insulation	HDPE
Insulation Dia	0.9mm ± 0.05
Core colour	white-blue;white-orange;white-green&white-brown
Shield	Aluminum Foil
Shield	80*0.12 Aluminum braiding
Jacket Material	PVC
Colour	Gray
Size	7.0mm ± 0.2
Wall thickness	0.7mm

Electric data at 20°C

Conductor Resistance	≤93.8 Ω /km
Insulation Resistance	≥5000MΩ X KM
Testing Voltage	wire/wire50Hz 1min=1.5KV
Permissible temperature	-10°C to 60°C

Other Electric data

Frequency	Impedance	RL	NEXT	PSNEXT	ELFEXT	PSELFEXT	ACR	PSACR
Mhz	ohm	≥ dB/100m	≤ dB/100m	≥ dB/100m	≥ dB/100m	≥ dB/100m	≥ dB/100m	≤ ns/100m
1	100 ± 15	20.0	65.3	62.3	63.8	60.8	72.3	70.3
4		23.0	56.3	53.3	51.7	48.7	61.5	59.5
10		25.0	50.3	47.3	43.8	40.8	53.3	51.3
16		25.0	47.3	44.3	39.7	36.7	48.6	46.6
20		25.0	44.5	42.8	37.7	34.7	46.3	44.3
31.25		23.6	42.9	39.9	33.9	30.9	41.2	39.2
62.5		21.5	38.4	35.4	27.8	24.8	32.0	30.0
100		20.1	35.3	32.3	23.8	20.7	24.5	22.5

CAT6A U/UTP Cable



Specifications:

Inner conductor	Single Bare Copper 23AWG
Insulation	HDPE
Insulation Dia	1.12mm ± 0.05
Twisted pair color code	1: white-blue/blue 2: white-orange/orange 3: white-green/green 4: white-brown/brown
Shielding	Drain wire(26AWG)
Jacket Material	Mylar tape laminated with aluminium foil as a shield
Colour	Blue
Size	7.2mm ± 0.3
Wall thickness	0.8mm

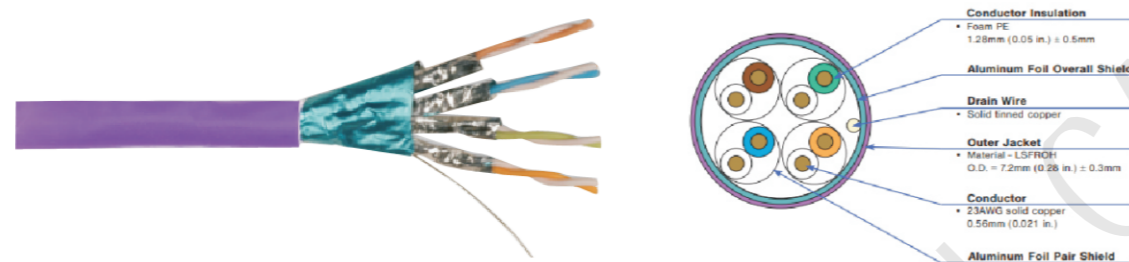
Electric data at 20°C

Conductor Resistance	≤93.8 Ω /km
Insulation Resistance	≥5000MΩ X KM
Testing Voltage	wire/wire50Hz 1min=1.5KV
Permissible temperature	-10°C to 60°C

Other Electric data

Frequency	Impedance	RL	NEXT	PSNEXT	ELFEXT	PSELFEXT	ACR	PSACR
Mhz	ohm	≥ dB/100m	≤ dB/100m	≥ dB/100m	≥ dB/100m	≥ dB/100m	≥ dB/100m	≤ ns/100m
1	100 ± 15	20.0	65.3	62.3	63.8	60.8	72.3	70.3
4		23.0	56.3	53.3	51.7	48.7	61.5	59.5
10		25.0	50.3	47.3	43.8	40.8	53.3	51.3
16		25.0	47.3	44.3	39.7	36.7	48.6	46.6
20		25.0	44.5	42.8	37.7	34.7	46.3	44.3
31.25		23.6	42.9	39.9	33.9	30.9	41.2	39.2
62.5		21.5	38.4	35.4	27.8	24.8	32.0	30.0
100		20.1	35.3	32.3	23.8	20.7	24.5	22.5

CAT6A F/FTP Cable



Specifications

Inner conductor	Single Bare Copper 23AWG
Insulation	HDPE
Insulation Dia	1.28mm ± 0.5
Core colour	white-blue;white-orange;white-green&white-brown
Shield	Aluminium Foil Overall Shield Aluminium Foil Pair Shield
Drain wire	26AWG
Jacket Material	LSZH
Colour	Purple
Size	7.4mm ± 0.3
Wall thickness	0.8mm

Electric data at 20°C

Conductor Resistance	<7.32 Ω/100m
Mutual Capacitance	5.6 nF/100m
Capacitance Unbalance	<160pF/100m
Coupling Attenuation	≥55 dB
Installation Temperature	0 to 50° C

Other Electric data

Frequency	Impedance	RL	NEXT	PSNEXT	ELFEXT	PSELFEXT	ACR	PSACR
Mhz	ohm	≥ dB/100m	≤ dB/100m	≥ dB/100m	≥ dB/100m	≥ dB/100m	≥ dB/100m	≤ ns/100m
1	100 ± 15	20.0	65.3	62.3	63.8	60.8	72.3	70.3
4		23.0	56.3	53.3	51.7	48.7	61.5	59.5
10		25.0	50.3	47.3	43.8	40.8	53.3	51.3
16		25.0	47.3	44.3	39.7	36.7	48.6	46.6
20		25.0	44.5	42.8	37.7	34.7	46.3	44.3
31.25		23.6	42.9	39.9	33.9	30.9	41.2	39.2
62.5		21.5	38.4	35.4	27.8	24.8	32.0	30.0
100		20.1	35.3	32.3	23.8	20.7	24.5	22.5

CAT6A S/FTP Cable



Specifications

Inner conductor	Single Bare Copper 23AWG
Insulation	HDPE
Insulation Dia	1.28mm ± 0.5
Core colour	white-blue;white-orange;white-green&white-brown
Shield	Aluminium Foil Overall Shield Aluminium Foil Pair Shield Overall tinned-copper braid
Jacket Material	LSZH
Colour	Purple
Size	7.5mm ± 0.3
Wall thickness	1.0mm

Electric data at 20°C

Conductor Resistance	<7.8 Ω/100m	TCL	40-10 log(f) Db
Mutual Capacitance	5.6 nF/100m	Installation Temperature	0 to 50° C
Capacitance Unbalance	<160pF/100m	Storage Temperature	-20 to 75° C
NVP	74%		

Other Electric data

Frequency	Impedance	RL	NEXT	PSNEXT	ELFEXT	PSELFEXT	ACR	PSACR
Mhz	ohm	≥ dB/100m	≤ dB/100m	≥ dB/100m	≥ dB/100m	≥ dB/100m	≥ dB/100m	≤ ns/100m
1	100 ± 15	20.0	65.3	62.3	63.8	60.8	72.3	70.3
4		23.0	56.3	53.3	51.7	48.7	61.5	59.5
10		25.0	50.3	47.3	43.8	40.8	53.3	51.3
16		25.0	47.3	44.3	39.7	36.7	48.6	46.6
20		25.0	44.5	42.8	37.7	34.7	46.3	44.3
31.25		23.6	42.9	39.9	33.9	30.9	41.2	39.2
62.5		21.5	38.4	35.4	27.8	24.8	32.0	30.0
100		20.1	35.3	32.3	23.8	20.7	24.5	22.5

CY Control cable

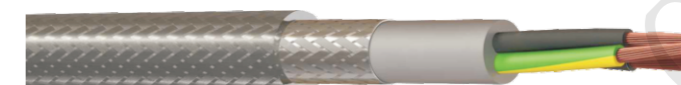


Cable Construction	
Applications	Electrical Characteristics
General Construction:	CY Low smoke halogen-free flexible screened cable for instrumentation and control equipment in tooling machinery, production lines, and flexible applications with free movement without tensile load.
Conductor Size:	3/4/5/7 CORE

Design & Materials	
Conductor Material:	Class 5 flexible plain copper
Conductor size	(0.5–1.5mm ²)
Conductor construction	Stranded
Insulation material	LSZH (Low Smoke Zero Halogen)
Separator	PET (Polyester Tape)
Screen	TCWB (Tinned Copper Wire Braid)
Conductor color code	Black numbered+Green/Yellow
Outer jacket color	Gray
Outer jacket	LSZH (Low Smoke Zero Halogen)
Marking	per request

Electrical Properties	
Voltage Rating U _o /U	300/500V
Temperature Rating	Fixed: -40°C to +70°C Installation: -5°C to +70°C
Minimum Bending Radius	Fixed: 6 x overall diameter Flexed: 10 x overall diameter

SY Control cable

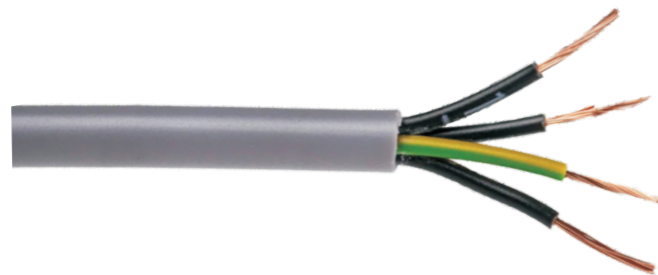


Cable Construction	
Applications	Measurement and control technology
General Construction:	CY Low smoke halogen-free flexible screened cable for instrumentation and control equipment in tooling machinery, production lines, and flexible applications with free movement without tensile load.
Conductor Size:	2/3/4/5/7 CORE

Design & Materials	
Conductor Material:	Class 5 flexible plain copper
Conductor size	(0.75–6mm ²)
Conductor construction	Stranded
Insulation material	PVC (Polyvinyl Chloride)
Inner Sheath	PVC (Polyvinyl Chloride)
Inner Sheath color	Gray
Armour	GSWB (Galvanised Steel Wire Braid)
Conductor color code	Black numbered+Green/Yellow
Outer jacket color	Transparent
Outer jacket	PVC (Polyvinyl Chloride)
Marking	per request

Electrical Properties	
Voltage Rating U _o /U	300/500V
Temperature Rating	Fixed: -40°C to +70°C Installation: -5°C to +70°C
Minimum Bending Radius	Fixed: 4 x overall diameter Flexed: 12.5 x overall diameter

YY Control cable



Cable Construction	
Applications	Measurement and control technology
General Construction:	YY Control is a flexible multi-core cable with class 5 flexible annealed plain copper conductors
Conductor Size:	2/3/4/5/7 CORE

Design & Materials	
Conductor Material:	Class 5 flexible plain copper
Conductor size	2C*(0.75–10mm ²)
Conductor construction	Stranded
Insulation material	PVC/PP
Cable or cross section area(mm ²)	27–172
Conductor color code	Black numbered+Green/Yellow
Overall diameter(mm)	5.9–14.8
Outer jacket color	Gray
Outer Jacket Material:	PVC
Marking	per request

Electrical Properties	
Voltage Rating U ₀ /U	300/500V
Temperature Rating	Fixed: -40°C to +70°C Installation: -5°C to +70°C
Minimum Bending Radius	Fixed: 5 x overall diameter Flexed: 10 x overall diameter

Thermostat wire - unshielded cl2/cmh



Rated 150 Volt , Sunlight-Resistant 60°C 18 and 20 Gauge Copper Conductors

Cable Construction	
Applications	Used for power limited circuits such as thermostat ,air conditioning and heating controls, heat pumps, bell and alarm systems, intercom systems, door bells, remote control units where maximum voltage does not exceed 30 volts.
CONSTRUCTION	Solid copper conductors with 6 mils of HDPE insulation Conductors are covered with a FR PVC jacket, Brown Rip cord"
Conductor Size:	2–12 CORE

Design & Materials	
Conductor Material	Annealed Solid bare copper
Conductor size	20AWG
Conductor construction	Solid
Insulation material	FR-PVC
Color code:	see chart below
Inner Sheath color	Red/White/Green
Outer jacket	FR-PVC Brown or White
Marking	Evey 2 feet sequential marking
Suitable for use	From -20°C to +75°C

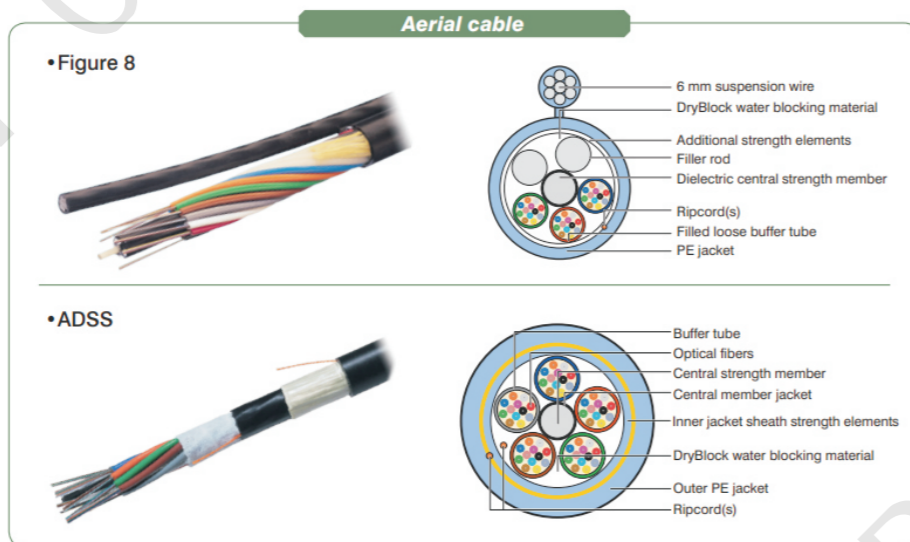
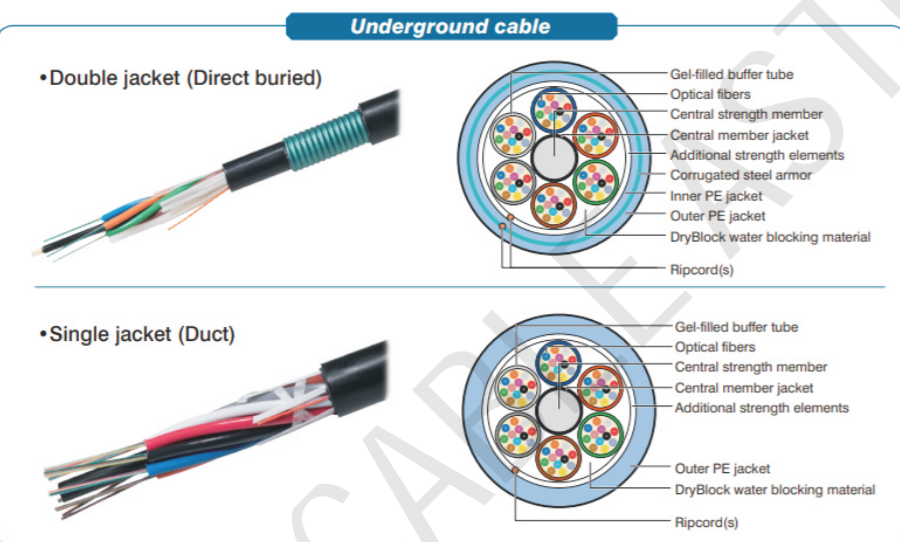
Color Code Chart						
No. of Conductor	1	2	3	4	5	6
Color	Red	White	Green	Blue	Yellow	Brown
No. of Conductor	7	8	9	10	11	12
Color	Orange	Black	Pink	Gray	Tan	Purple

Product Construction			
NO. of Conductor	AWG	Insulation Dia.mm	Jacket thickness mm
2–12	20	1.25	0.43

Fiber Optic Cables

Features and Benefits

- ◆ Time proven technologies with a proven history
- ◆ Available with full range of fiber types
- ◆ Fulfilling the needs for every situation (Duct, aerial, direct buried, and indoor application)
- ◆ Dry core technology for a more craft-friendly, jelly-free cable core, resulting easy of handling
- ◆ Available for metallic or non-metallic central strength member
- ◆ Proven loose tube design provides outstanding optical fiber protection
- ◆ Armored structure provides outstanding mechanical strength and enhanced rodent protection
- ◆ Ripcord allows easy jacket removal



Construction						
Fiber count		2-60	61-72	73-96	97-120	121-144
Outdiameter	Double jacket	12.9	13.6	15.3	17	18.6
	Single jacket	10.1	10.7	12.5	14.1	15.7
Weight(kg/km)	Double jacket	162	182	223	280	318
	Single jacket	77	88	116	147	186
Minimum bending radius (mm)	Double jacket	129	136	153	170	186
	Single jacket	101	107	125	141	157

Fiber count	Figure 8	2-60	62-72	74-96
	ADSS	2-30	31-288	
OD(mm)	Figure 8	11x20.3	12.2x 24	14x25.9
	ADSS	Based on maximum pulling tension		
Weight(kg/km)	Figure 8	311	336	372
	ADSS	Based on maximum pulling tension		
Maximum pulling tension (N)	Figure 8	2700		
	ADSS	Based on maximum pulling tension		
Minimum bending radius (mm)	Figure 8	203	240	259
	ADSS	10x cable diameter		
Maximum pulling tension (N)		2700		



Standard Self-Supporting Bow-type FTTH cable



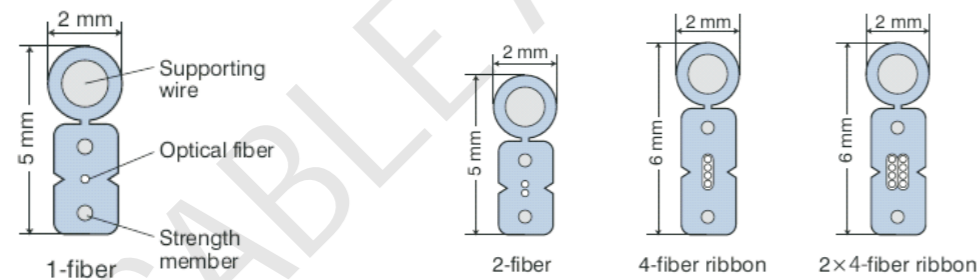
G.657.A1

G.657.A2

(GJYXCH/GJYXFCH)

Features and Benefits

- ◆ Time proven technologies with long supplied record
- ◆ Easy jacket removal without special tools
- ◆ Self support structure
- ◆ Compact cable size
- ◆ Available with flame retardant jacket
- ◆ Available from 1 to 8-fiber counts



Specification				
Cable type		Drop cable		
Fiber count		1	2	4 8
Cable dimension (Wxh mm)		2x5		2x6
Supporting wire (mm)		1.2		
Strength member(mm)		Metallic steel wire 2.4		
		Non-metallic FRP 0.5		
Weight(kg/km)		20	25	
Maximum pulling tension (N)		690		
Minimum bending radius(mm)	With supporting wire		240	
	Without supporting wire	metallic	Dynamic: 30 Static: 15	Dynamic:50
		non-metallic	Dynamic: 50 Static: 15	Static: 50
Standard length(m)		500		

Standard Bow-Type FTTH Cable



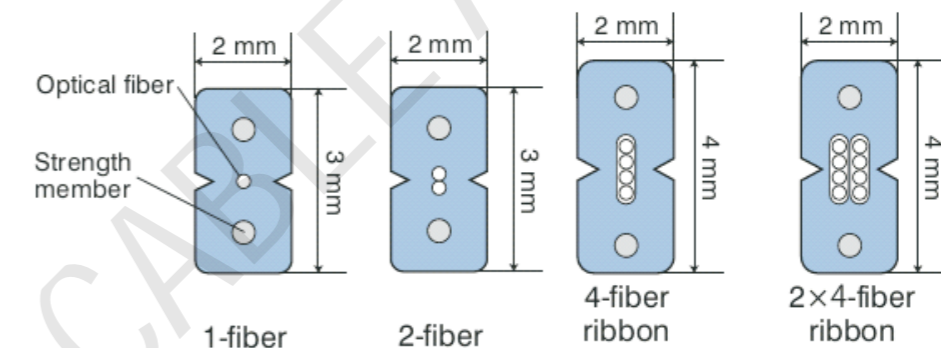
G.657. A1

G.657. A2

(GJXH/GJFH)

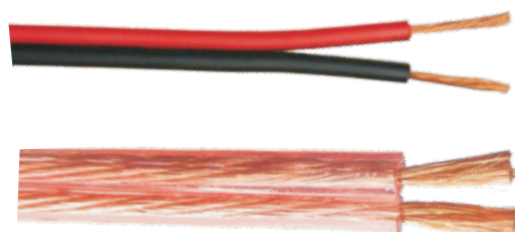
Features and Benefits

- ◆ Time proven technologies with long supplied record
- ◆ Easy jacket removal without special tools
- ◆ Compact cable size
- ◆ Available with flame retardant jacket
- ◆ Available from 1 to 8-fiber counts"



Specification				
Cable type		Indoor cable		
Fiber count		1	2	4 8
Cable dimension (Wxh mm)		2x3		2x4
Strength member(mm)		Metallic steel wire 2.4		
		Non-metallic FRP 0.5		
Weight(kg/km)		10	11	
Maximum pulling tension (N)		147		
Minimum bending radius(mm)	With supporting wire		60	
	Without supporting wire	metallic	Dynamic: 30 Static: 15	Dynamic:50
		non-metallic	Dynamic: 30 Static: 15	Static: 50
Standard length(m)		500		

Speaker cable



Specifications					
Cross section (mm ²)	2x0.5	2x0.75	2x1.5	2x2.5	2x4
Cond. Make-up	16 x 0.2	24 x 0.2	28 x 0.25	48 x 0.25	55 x 0.3
Insulation h x w mm	2.0 x 5.0	2.2 x 4.9	2.6 x 5.5	3.3 x 7.0	4.3 x 8.2
Sheath material	PVC	PVC	PVC	PVC	PVC
Sheath colour	Transparent Red/black	Transparent Red/black	Transparent Red/black	Transparent Red/black	Transparent Red/black
Weight approx. kg/km	15	20	37	63	80
Loop resistance max. Ohm/kg	70	47	23	14	9
Capacitance (pF/m)	47	60	67	67	64
Inductance uH/m at					
1 kHz	0.7	0.61	0.54	0.54	0.58
10 kHz	0.8	0.73	0.59	0.62	0.65
100 kHz	0.8	0.73	0.59	0.62	0.65
1000 kHz	0.8	0.67	0.52	0.56	0.59

Specifications					
Cross section (mm ²)	2x1.5	2x2.5	2x4	2x6	2x10
Cond. Make-up	189 x 0.1	322 x 0.1	511 x 0.1	777 x 0.1	1273 x 0.1
Insulation h x w mm	3.1 x 6.5	3.6 x 7.5	5.0 x 10.2	6.1 x 12.5	7.0 x 15.0
Sheath material	PVC	PVC	PVC	PVC	PVC
Sheath colour	Transparent Red/black	Transparent Red/black	Transparent Red/black	Transparent Red/black	Transparent Red/black
Weight approx. kg/km	41	60	79	136	254
Loop resistance max. Ohm/kg	23	14	9	6	3
Capacitance (pF/m)	67	53	50	54	59
Inductance uH/m at					
1 kHz	0.54	0.48	0.49	0.46	0.45
10 kHz	0.61	0.55	0.56	0.54	0.53
100 kHz	0.62	0.59	0.6	0.56	0.56
1000 kHz	0.55	0.54	0.56	0.53	0.52

Speaker cable round



Type	Cable structure	Conductor material	Core insulation	Core colours	Sheath material	Cable external diameter	Sheath colour
Speaker cable	2 x 1.5	Bare copper	PVC	Red, black	PVC	approx.6.6mm	Black

Electrical characteristics Loop resistance max. Ohm/kg	12.7 Ohm/km
Technical data Weight:	approx. 73.4kg/km
Min.bending radius for laying:	33 mm
Operating temperature range min:	-10 °C
Operating temperature range max:	+70 °C
Copper weight:	28.8 kg/km

Cable structure	Conductor resistance ohm/km	Outer diameter approx.mm	Cop.weight kg/km	Weight approx.kg/km
2 x 1.5	< 12.7	6.6	28.8	73.4
2 x 2.5	< 7.9	7.5	48	106.9
2 x 4.0	< 4.9	9.4	76.8	163.7
4 x 2.5	< 7.9	8.8	96	169.3
4 x 4.0	< 4.9	11.6	153.6	272.4
8 x 2.5	< 7.9	13.5	192	349
8 x 4.0	< 4.9	16.8	307.2	541.6

Alarm cable



Construction	
Conductor material	Tinned copper 7*0.2
Conductor insulation	LSZH
Outshield material	LSZH
Outshield colour	White
Core Identification	1 Red/2 Blue/3 Yellow/4 Black/5 White/6 Green 7 Orange/8 Brown/9 Grey/10 Pink/11 Violet/12 Turquoise

Electrical Characteristics	
Nominal Conductor Resistance @ 20°C	< 100 Ω/km
Insulation Resistance	> 1 MΩ.KM
Voltage Rating	30 V
Test Voltage	2 kV for 5 Minutes

Physical Characteristics	
Overall Diameter	See Table
Min. Bend Radius	15 x OD
Temperature Rating	-0°C to 70°C
Weight	See Table

Fire Alarm cable 2*1.5mm



Applications: Short-range low-frequency signals, Fire alarm, Indoor

General Construction:	The cable contains one 16 AWG PVC insulated twisted pair, overall polyester/aluminum foil shielded, with outer PVC jacket.
Conductor Size:	1.38 mm BC
Outer Jacket Material:	FR-PVC

Design & Materials			
Conductor Material	Bare copper	Drav wire	1/0.4 ± 0.005 TC
Conductor size	2*1.5mm(16AWGX2C)	Total number of wires	2
Conductor construction	Solid	Total number of conductor units	1
Insulation material	PVC	Outer jacket thickness	0.7 mm
Insulation O.D.	2.08 ± 0.05mm	Outer jacket color	red
Conductor color code	Black x red	Jacket Diameter	6.0 ± 0.2 mm
Overall shield design	100% coverage	Marking	per request
Overall shield material	Aluminum/Polyester foil		

Electrical Properties	
Max. DC resistance	13.5 Ω/km 20°C
Temperature rating	-20~75
Voltage rating	300 V max
Insulation Resistance	0.012

Unshield Fire Alarm cable 2*2.5mm



Applications: Short-range low-frequency signals, Fire alarm, Indoor

General Construction:	The cable contains one 14 AWG PVC insulated twisted pair, overall polyester/aluminum foil shielded, with outer PVC jacket.
Conductor Size:	1.58 mm BC
Outer Jacket Material:	FR-PVC

Design & Materials

Conductor Material:	Bare copper	Total number of wires	2
Conductor size	2*2.5mm(14AWGX2C)	Total number of conductor units	1
Conductor construction	Solid	Outer jacket thickness	0.8 mm
Insulation material	PVC	Outer jacket color	red
Insulation O.D.	2.58±0.05mm	Jacket Diameter	7.1 ± 0.2 mm
Conductor color code	Black x red	Marking	per request

Electrical Properties

Max. DC resistance	8.45Ω / km 20°C
Temperature rating	-20~75
Voltage rating	300 V max
Insulation Resistance	0.012

Coaxial Jumper cable

Cable With F Connectors



Cable with BNC Connector

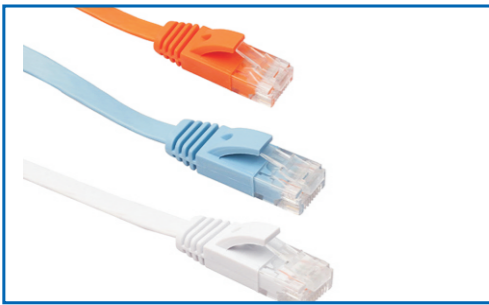


Package



Network Patch Cord

Flat CAT6 Cable



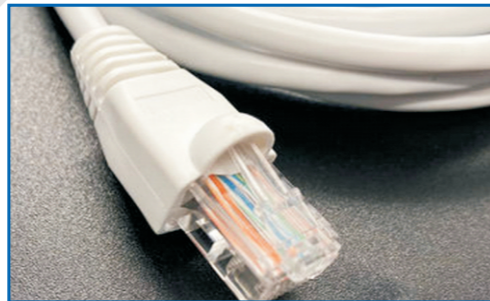
Round CAT6 Cable



CAT6 Shield RJ45



Unshield RJ45



Package

